

Cornell University

Cooperative Extension

Yates County



Hallpine Farms
Ag Protection Project 2009



2009 Annual Report



MESSAGE FROM THE PRESIDENT

BOB WORDEN, CCE YATES 2009 BOARD OF DIRECTORS, PRESIDENT

I have sometimes told people that Cornell Cooperative Extension is truly an appropriately named organization:

“Cornell” – the source for research-based knowledge that continues to increase and make a local impact.

“Cooperative” – A mindset and style to create long-term relationships built on teamwork and collegiality.

“Extension” – Availability of locally-based, knowledgeable educators to apply and customize solutions to local situations.

This model has worked for Yates County for decades. It is CCE’s focus on solutions that appeals to me and brings success. In each of the last five years of my CCE Yates board membership, I continue to be impressed by the number of ways CCE touches and improves the lives of Yates County residents and, in the process, strengthens the local economy. Here are some notable examples from 2009.

Facilitation of Farmland Protection grants that have resulted in the protection of 1100 acres in the past three years. These grants have amounted to \$2 million this year alone which, of course, positively affect the local economy.

Support for the Yates County Legislature committee on Marcellus Shale Natural Gas Drilling. CCE’s role was to assure availability of scientific and research data to assure a rational decision-making process on this potential opportunity.

Continued support for the Dairy, Viticulture and Vegetable program helping to assure that farmers get and use research information to support successful crops. Many thousands of dollars of crop value were saved this year due to the rapid response from CCE vegetable specialists and Master Gardeners by providing timely management practices to prevent Late Blight.

Last year I mentioned that we all seem to have different historical touch-points to understanding CCE since the organization covers a very broad range of issues from

agricultural support to youth development. My initial touch-point comes from CCE’s continuing efforts to improve Keuka Lake water quality. But, I soon developed a strong appreciation for CCE’s other program areas. You can learn more about the many ways CCE touches our lives by reading the program summaries in this 2009 Annual Report.

From a personal standpoint, I came away this year with a greater understanding of the importance of the work of the long-standing 4-H program, having had the opportunity to judge some local and regional 4-H presentation events. Since I did not grow up as a 4-H member, I came away completely impressed by the capability of our 4-H youth to plan, carry out, and complete projects, and then present them enthusiastically and professionally. They understand that these projects take weeks of commitment and work and that the rewards are both internal and external in terms of self confidence and capability. In many ways, life is about completing projects, large or small. CCE and the volunteer 4-H leadership team are building these lifelong skills.

The Yates CCE staff has enjoyed a reputation for providing unbiased and reliable support for local governments, businesses and agencies. This credibility has been earned through years of responsiveness and plain hard work.

Last year I asked you to help spread the word on the many valuable contributions CCE makes to life in Yates County. Truly you responded. Input from Yates County citizens detailing the ways CCE programs impacted their lives was invaluable in assuring continued local financial support.

I close by thanking you for your support in the past, present and, the future.

Bob Worden
President

2009 BOARD OF DIRECTORS

Bob Worden, President
Tom Rood, Vice President
Bob Gillespie, Treasurer
Catherine Fritz, Secretary
Dana Burton
Dawn Dennis
Jonathan Hunt
Peter Martini
Jeff Oswald
Sarah Stackhouse
Kathy Waye

COUNTY LEGISLATOR

William R Holgate

CORNELL UNIVERSITY REPRESENTATIVE

Paul O’Connor



MISSION STATEMENT

The Cornell Cooperative Extension educational system enables people to improve their lives and communities through partnerships that put experience and research to work.

Cornell Cooperative Extension of Yates County

417 Liberty Street

Penn Yan, NY 14527

Phone: 315-536-5123; Fax: 315-536-5117

Web: <http://counties.cce.cornell.edu/yates/>

Staff Directory

Peter Landre, Executive Director/Program Leader	ptl2@cornell.edu
Jessica Spence, Team Coordinator	jls233@cornell.edu
Megan Fenton, Sustainable Agriculture Educator and Land Protection Specialist	mef46@cornell.edu
Barb McGuffie, Nutrition Educator	bjm21@cornell.edu
Jen Clancey, 4-H Community Educator	
jja26@cornell.edu	
Sheri Bone Mezzapelle, Life Skills Program Educator	smm55@cornell.edu
Barb Elias, Bookkeeper	bje6@cornell.edu
Vivian Flynn, Administrative Assistant, Team Leader	vfj1@cornell.edu
Doreen Koch, Administrative Assistant	dek26@cornell.edu
Linda Davis, Administrative Assistant, Technology	leb15@cornell.edu
Donna McMinn, Administrative Assistant, Receptionist	drm235@cornell.edu

Finger Lakes Grape Program

Hans Walter-Peterson, Grape Specialist	hcw5@cornell.edu
Bill Wilsey, Grape Program Assistant	wtw2@cornell.edu

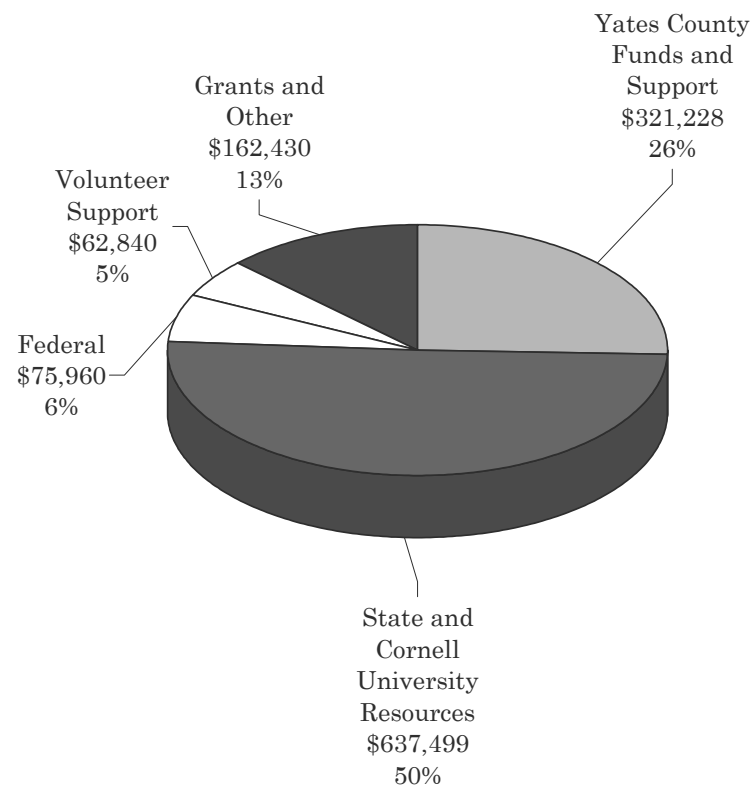
Northwest New York Dairy, Livestock and Field Crop Team

Jerry Bertoldo, DVM, Dairy Specialist	grb23@cornell.edu
John Hanchar, Farm Business Mgt. Specialist	jjh6@cornell.edu
James Kingston, Field Crop & Soils Specialist	jk2258@cornell.edu
Michael Stanyard, PhD., Field Crop Specialist	mjs88@cornell.edu
Nancy Glazier, Small Farm Specialist	nig3@cornell.edu
Collin McCarthy, Dairy Management	cgm2@cornell.edu

Cornell Vegetable Program

Judson Reid, Fresh Market/Greenhouse Specialist	jer11@cornell.edu
Carol McNeil, Vegetable Crop Specialist	crm6@cornell.edu
Julie Kikkert, Processing Vegetables Specialist	jak2@cornell.edu
Christy Hoepting, Processing Vegetables Specialist	cah59@cornell.edu

2009 CCE Value of Resources





YATES COUNTY FARMLAND PROTECTION

- ◆ To date, the Cornell Cooperative Extension of Yates County has obtained **\$3.8 million** in grants from the New York State Department of Agriculture and Markets to protect farmland in Yates County.
- ◆ This grant funding has been used to protect **1,130 acres** of prime farmland.
- ◆ For the past two years, CCE of Yates, Ontario and Seneca County have hosted the **“Protecting Agriculture in the Finger Lakes”** conference for over 230 farmers, municipal officials and Agriculture and Farmland Protection Board members to learn about tools and options for agriculture protection.
- ◆ For More Information Please Visit the Yates County Agriculture and Farmland Protection Board Website:
<http://counties.cce.cornell.edu/yates/afpb.html>





Cornell University
Cooperative Extension

Cornell Cooperative Extension of Yates County

JANUARY 2010

Building Strong and Vibrant New York Communities

CCE EVENTS AND TIPS FOR JANUARY

- January 5th – Making Ends Meet, 10:00am in Rushville
- January 6th – Save Energy, Save \$, 10:00am in Dundee
- January 11th – 4-H Leader & Parent Gathering, 7:00 pm
- January 12th – Credit and Debt Management, 10:00am in Rushville
- January 20th – Teen Council 5:30- 7:00pm
- January 25-27th – Empire State Fruit and Vegetable Exposition in Syracuse, New York
- Gardeners: Start collecting seed catalogs so you can begin planning your garden for next spring!

Sun	Mon	Tue	Wed	Thu	Fri	Sat
					1 Office Closed New Year's Holiday	2
3	4	5	6	7	8	9
10	11	12	13	14	15	16
17	18 Office Closed Martin Luther King Jr. Day	19	20	21	22	23
24	25	26	27	28	29	30
31						

Yates County Office Building
417 Liberty Street, Penn Yan, New York 14527

Phone: 315-536-5123; Fax: 315-536-5117
Website: www.cce.cornell.edu/yates

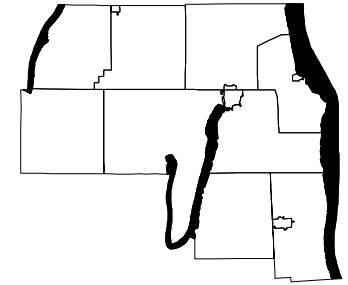
Cornell University



Cooperative Extension
Yates County

Friends of Cornell Cooperative Extension of Yates County

Cornell Cooperative Extension has served Yates County residents, businesses and communities for over 80 years. CCE's programs have touched the lives of many in our community. We would like to thank the individuals, families and businesses listed below that support us through the Friend of Cornell Cooperative Extension fundraising efforts. We have raised nearly \$5495 through this campaign



YATES COUNTY
NEW YORK

COMMUNITY BANK
FOUR CHIMNEYS VINEYARDS
FRANJO FARMS
FULLAGER FARMS
GRIDLEY VINEYARDS
KONSTANTIN WINE CELLARS
KNAPP & SCHLAPPI
SARA LAND VINEYARDS
SIMONS FAMILY
STORK INS. AGENCY
THE WINDMILL
VR FOOD EQUIP.
STEPHEN & MARY LOU ANDRUS
PHILLIP BAILEY
JAMES BEDIENT
BRUCE BORGLUM
ALBERT BRODSKY
KIRK & COOKIE BROOKS
GERARD BURTON
LEON BUTTON
JOAN CARROLL
ROBERT CORCORAN
JANE DAVIS
DAVID DEMARCO
PETER DETH

MICHAEL DOYLE
PREJEAN WINERY/ELIZABETH PREJEAN
BILL ERICKSON
KEN & EILEEN FARNAN
H. TAYLOR FITCH
BENNY FULKROD
ALAN GILES
RODNEY HALL
DALE & KAREN HALLINGS
ERIC & BARB HAVILL
WILLIAM HOLGATE
HARRY HUMPHREYS
HOWARD & ELWYN HUNT
ROBERT & DONABETH JENSEN
EVELYN JENSEN
JOHN KRIESE
WILLIAM LAFFIN
LARRY LEWIS
GARY LILYEA
CHARLES MARKS
KLAAS & MARY HOWELL MARTENS
LAKEVIEW GRAIN/MARY HOWELL MARTENS
MOON VALLEY PLANT COL MARY SWEET
DOUGLAS MILES
DOUG MILES

KARL MORTENSEN
THOMAS MURPHY, JR.
GULLY'S EDGE VINEYARD NADINE BOCEK
PETER ROGERS
LENHART SANER
R.A. SENDES
ED SEUS
LYNN SIMMONS
HOWARD & IRENE SOPER
SARAH STACKHOUSE
NY WINE & GRAPE SUSAN SPENCE
DONALD TONES
WILLIAM AND CHERYL TURNER
HOWARD WEBSTER
LEONARD WILTBERGER
WILLIAM FEINSTEIN/VENTURA DEV.
ROBERT WORDEN

43 ANONYMOUS DONORS



Cornell University
Cooperative Extension

Cornell Cooperative Extension of Yates County

FEBRUARY 2010

Building Strong and Vibrant New York Communities

CCE EVENTS AND TIPS FOR FEBRUARY

- February 6th – Save Energy, Save Dollars – 6:00pm in Penn Yan
- February 10th, 17th, 24th – Pesticide Applicator Training & Recertification Course
- February 16th – 4-H Public Presentations, 6:00– 9:00 pm
- February 17th – Teen Council 5:30 – 7:00pm
- February 20th – 4-H Public Presentations 9:00am – noon
- February 25th – 4-H Spaghetti Dinner Fund Raiser, Penn Yan Moose Club
- TBA – 4-H Teen Winter Weekend
- Gardeners: For long season vegetable crops start growing them indoors near the end of the month.

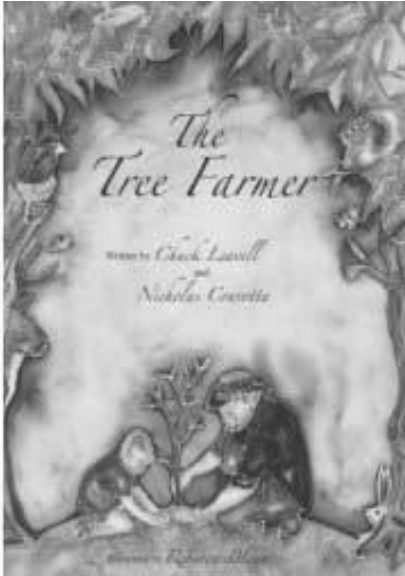
Sun	Mon	Tue	Wed	Thu	Fri	Sat
	1	2	3	4	5	6
7	8	9	10	11	12	13
14	15	16	17	18	19	20
	Office Closed President's Day					
21	22	23	24	25	26	27
28						

Yates County Office Building
417 Liberty Street, Penn Yan, New York 14527

Phone: 315-536-5123; Fax: 315-536-5117

Website: www.cce.cornell.edu/yates

Agriculture Literacy Week



Agriculture Literacy Week is an annual event that is part of the New York State Agriculture in the Classroom curriculum. It's goal is to create a better understanding of local agriculture in early elementary aged students, specifically second graders.

In 2009, the apple industry was highlighted with the book, *The Empire State Investigator: The Applesauce Bandit*, written by Juleah Tolosky and Heather Davis. This book was read to 185 elementary students in Yates County.

In 2010, the Timber Industry will be highlighted with the book, *The Tree Farmer*, written by Chuck Leavell and Nicholas Cravotta. For more information about this book, you can visit www.thetreefarmer.org.



**New York Agricultural Education Outreach
New York Agriculture In The Classroom**



Cornell University
Cooperative Extension

Cornell Cooperative Extension of Yates County

MARCH 2010

Building Strong and Vibrant New York Communities

CCE EVENTS AND TIPS FOR MARCH

- March 3rd – Pesticide Applicator Training & Recertification Course, Exam March 10th
- March 8th – 4-H Leader & Parent Gathering
- March 13th – 4-H Expo
- March 17th – Teen Council 5:30 – 7:00pm
- March 20th – 4-H Horse Extravaganza; FL Dairy Bowl
- March 23rd – 4-H Teen Leader Training, 6:30pm
- March 27th – 4-H District Public Presentations & Horse Communications
- March 27th Yard N' Garden Day
- Gardeners: It may still be a little chilly, but prune all of those fruit trees before any new growth begins!

Sun	Mon	Tue	Wed	Thu	Fri	Sat
	1	2	3	4	5	6
7	8	9	10	11	12	13 Daylight Savings Time Begins
14	15	16	17	18	19	20
21	22	23	24	25	26	27
28	29	30	31			

Yates County Office Building
417 Liberty Street, Penn Yan, New York 14527

Phone: 315-536-5123; Fax: 315-536-5117

Website: www.cce.cornell.edu/yates

NORTH WEST NEW YORK DAIRY, LIVESTOCK AND FIELD CROPS PROGRAM



The NWNY Dairy, Livestock and Field Crops Team is dedicated to providing lifelong education to the agricultural community to assist them in achieving their goals. The Team seeks to build producer capabilities to enhance profitability, practice environmental stewardship, better employee and family well-being, provide safe and healthful agricultural products and promote strong relationships in their communities.

Our audience ranges from some of the state's largest dairy and crop producers to hobby farmers with just a few production animals and acres of land. A wide range of field crop production practice including corn, soybeans, wheat and hay is addressed by the team. Integrated crop and pest management programs are exemplified by small Tactical Agricultural or TAg Teams to the popular annual Corn and Soybean Congresses. Education in dairy and livestock management ranges from one day seminars to multiple session, hands on training. Team facilitated discussion groups bring producers together to share ideas and experiences. Dairy

producers have the option of employee training and facilitation in Spanish.

Team field research projects have included soil fertility, animal growth efficiency, crop variety evaluation, crop cultural practices, value added marketing, manure odor control and on-farm composting. Financial analysis and benchmarking is available through the Dairy Farm Business Summary program. Small farm initiatives have been implemented in collaboration with area Soil & Water District and the National Resources Conservation Service.

In keeping with a long valued extension tradition, individual farm needs are still addressed on a one-on-one basis.



FARM BUSINESS SUMMARY AND ANALYSIS

The NWNY Dairy, Livestock, and Field Crops Program cooperates with farm business owners to complete farm business summary and analysis work. Work begins in January and continues through late April. Cornell University Cooperative Extension's Dairy Farm Business Summary Program is used with dairy farms, and the Financial Statements for the Agriculture Program is used to work with other producers. Contact John Hanchar, email: jjh6@cornell.edu, phone: 585-658-3250 extension 112, to participate.



Cornell University
Cooperative Extension

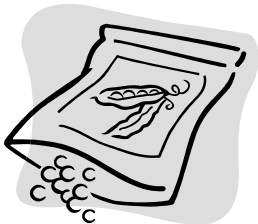
Cornell Cooperative Extension of Yates County

APRIL 2010

Building Strong and Vibrant New York Communities

CCE EVENTS AND TIPS FOR APRIL

- April 20th – Making Ends Meet, 10:00 am in Dundee
- April 21st – Teen Council Meeting 5:30 – 7:00pm
- April dates to be announced
- April 27th – Credit and Debt Management, 10:00 am in Dundee
- Gardeners: As soon as the soil is workable plant cold weather vegetables like spinach, peas, lettuce, and broccoli.



Sun	Mon	Tue	Wed	Thu	Fri	Sat
				1	2	3
4	5	6	7	8	9	10
11	12	13	14	15	16	17
18	19	20	21	22	23	24
25	26	27	28	29	30	

Yates County Office Building
417 Liberty Street, Penn Yan, New York 14527

Phone: 315-536-5123; Fax: 315-536-5117

Website: www.cce.cornell.edu/yates

PATHS TO SUCCESS

healthy children, healthy families



➔ **Eating More Vegetables and Fruits**

➔ **Playing Actively**

➔ **Eating Fewer High-Fat and High-Sugar Foods**

➔ **Limiting TV and Computer Time**

➔ **Drinking Water or Milk Instead of Sweetened Drinks**

➔ **Having Sensible Servings**



I keep cut-up veggies and fruit in the fridge — easy to grab when the kids need a snack.

Instead of just going for a walk, we walk to the playground, to school, or to the store. Now my kids are asking me to walk places.

The kids have fun helping, so it doesn't take that long to make healthy family meals that taste better than fast food!

I turned off the TV and my children didn't care. They went off and played. I didn't think it would be that easy!

I just don't bring soda into our home anymore.

I used to give my kids servings that were way too big. Now I let them serve themselves... They are happier at the table and seem to know when they are full.



Collaboration for Health, Activity and Nutrition in Children's Environments (CHANCE) Copyright 2007, Division of Nutritional Sciences, Cornell University. This material is based upon work supported by Smith-Lewis funds from the Cooperative State Research, Education, and Extension Service, U.S. Department of Agriculture. Any opinions, findings, conclusions, or recommendations expressed in this publication are those of the author(s) and do not necessarily reflect the view of the U.S. Department of Agriculture.



Cornell University
Cooperative Extension

Cornell Cooperative Extension of Yates County

MAY 2010

Building Strong and Vibrant New York Communities

CCE EVENTS AND TIPS FOR MAY

- May 1st – Horse Certificates due to 4-H office
- May 1st – Animal Crackers at Cornell
- May 10th – 4-H Leader and Parent Gathering, 7:00 pm
- May 19th – Teen Council Meeting, 5:30 – 7:00 pm
- Gardeners: Prepare the ground and plant the rest of the vegetables you will be growing from seed. To warm the soil, experiment with row covers.
- Master Gardener Plant Sale at the Windmill – date to be announced

Sun	Mon	Tue	Wed	Thu	Fri	Sat
						1
2	3	4	5	6	7	8
9	10	11	12	13	14	15
16	17	18	19	20	21	22
23	24	25	26	27	28	29
30	31 Office Closed Memorial Day observed					

Yates County Office Building
417 Liberty Street, Penn Yan, New York 14527

Phone: 315-536-5123; Fax: 315-536-5117

Website: www.cce.cornell.edu/yates

Opportunities to Buy Locally Grown Food

Farmers' Markets

In Yates County, there are two Farmers' Markets to visit in addition to road side stands and the Windmill. The Yates County Cooperative Farm and Craft Market is held on Saturday mornings on Main Street in Penn Yan. For information contact Annetta Martin at 315-536-2473.

The new 2009 Dundee Farmers' Market was held on Wednesday afternoons, behind the Methodist Church on Water Street. Plans for the 2010 season are underway — call Janie Levatino for information, 607-678-4087, or email her at jhlev@yahoo.com.

CSA

The first Penn Yan Community Supported Agriculture (CSA) began this year. Participating farmers grew enough food to supply over 40 families with vegetables throughout the growing season. If you would like information about the 2010 CSA, contact Jan Hafner at 315-536-7632 or email her at JLHAFNER@gmail.com



Check out our Local Produce Guide for information about local farms, dates and hours of operation and U-Pick opportunities!



Cornell University
Cooperative Extension

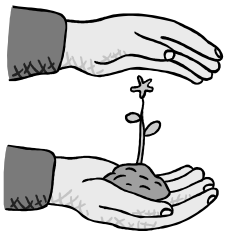
Cornell Cooperative Extension of Yates County

JUNE 2010

Building Strong and Vibrant New York Communities

CCE EVENTS AND TIPS FOR JUNE

- June 5th – Child Health and Safety Fair
- Advanced entries for Yates County Fair due – date to be announced
- Yates County Fair Clean-Up date to be announced
- Gardeners: Harden off your indoor transplants (ex. Tomatoes) and get them planted as soon as they are ready.



Sun	Mon	Tue	Wed	Thu	Fri	Sat
		1	2	3	4	5
6	7	8	9	10	11	12
13	14	15	16	17	18	19
20	21	22	23	24	25	26
27	28	29	30			

Yates County Office Building
417 Liberty Street, Penn Yan, New York 14527

Phone: 315-536-5123; Fax: 315-536-5117

Website: www.cce.cornell.edu/yates

Yates County Fair

July 13-17, 2010

There are many exciting activities planned and the 4-H youth have been hard at work getting projects ready to put in the exhibit hall and animals ready to fill the barn. Through hands-on learning, 4-H strives to “make the best better.” The Yates County Fair is an opportunity for the 4-H’ers to showcase the skills they have learned during the year. See you at the fair, and don’t forget to stop for an ice cream at Scooper’s Dairy Bar!





Cornell University
Cooperative Extension

Cornell Cooperative Extension of Yates County

JULY 2010

Building Strong and Vibrant New York Communities

CCE EVENTS AND TIPS FOR JULY

- July 12th- 4-H Judging at the Yates County Fair grounds
- July 13th through 17th – Yates County Fair
- July – 4-H camps begin
- Dates to be announced for the 4-H 3A Award Trip and Career Exploration at Cornell University
- Gardeners: Weed, weed and more weeding! Water your garden as needed, experiment with drip irrigation and remember it is best to water early in the day.



Sun	Mon	Tue	Wed	Thu	Fri	Sat
				1	2	3
4	5	6	7	8	9	10
11	12	13	14	15	16	17
18	19	20	21	22	23	24
25	26	27	28	29	30	31

Yates County Office Building
417 Liberty Street, Penn Yan, New York 14527

Phone: 315-536-5123; Fax: 315-536-5117

Website: www.cce.cornell.edu/yates

SUMMER PROGRAMMING

Did you know that CCE of Yates County does special youth Summer Programming at sites throughout Yates County? In 2009 programming was done at Rainbow Junction, Red Jacket and Indian Pines Parks, Kids Adventure Time, and the Towns of Torrey and Dundee. Check out some of the exciting programs that were offered!



JUMP INTO FOODS & FITNESS (JIFF) - a series of lessons that encourage school-aged youth to develop healthier lifestyles. Lessons included activities, games, and snacks to improve overall health. Instructor: Barb McGuffie

COOKING UP FUN - A program designed to teach youth the fundamentals of cooking and promote healthy eating habits and independent cooking. Instructor: Donielle Dennis.



BIGGER, BETTER BUBBLES - A hands on look at how bubbles are made and what makes them pop. Youth made their own bubble blowers and experimented with different bubble solutions to create the biggest bubble possible. Instructor: Jen Clancey

PUBLIC SPEAKING 101 - A hands on program that instructed youth at Kids Adventure Time how to organize their thoughts and speak in a professional manner. By the end of this 6 week program the participants served as MCs for the groups graduation. Instructor: Jessica Spence



BIRD'S EYE VIEW - A look at the characteristics of 16 different birds found in NY. Participants were given posters of each bird to keep at their rec site and then made birdfeeders to watch for and identify bird species throughout the summer. Instructor: Josh Burgert





Cornell University
Cooperative Extension

Cornell Cooperative Extension of Yates County

AUGUST 2010

Building Strong and Vibrant New York Communities

CCE EVENTS AND TIPS FOR AUGUST

- 4-H Sewing Camp, date TBA
- August 26th through September 6th – New York State Fair
- August 30th through September 2nd – Yates County Building Exhibits at the NYS Fair
- Gardeners: Preserve the harvest; as the bounty becomes plentiful preserve fruits and vegetables in small batches so you can enjoy them through the winter



Sun	Mon	Tue	Wed	Thu	Fri	Sat
1	2	3	4	5	6	7
8	9	10	11	12	13	14
15	16	17	18	19	20	21
22	23	24	25	26	27	28
29	30	31				

Yates County Office Building
417 Liberty Street, Penn Yan, New York 14527

Phone: 315-536-5123; Fax: 315-536-5117

Website: www.cce.cornell.edu/yates

FINGER LAKES GRAPE PROGRAM HELPS GROWERS DURING CHALLENGING 2009 SEASON

Every farmer knows that some years will be more challenging than others – it just goes with the territory. Grape growers in the Finger Lakes certainly had their share of challenges in 2009, including a cool and somewhat wet growing season, and a reduction in the demand for grapes this year by many buyers, which led to price reductions for most varieties.

The Finger Lakes Grape Program (FLGP) responded to these challenges in several ways. The FLGP provided the industry with timely, research-based information on disease control, vine nutrition and crop management in order to help growers produce a quality crop even in a less-than-perfect growing season. The FLGP distributes this information to over 300 growers and wineries in the Finger Lakes and elsewhere, including 91 in Yates County, through a number of means, including its weekly *Vineyard Update* e-mails, the *Vineyard Notes* newsletter, field meetings, the annual Finger Lakes Grape Growers' Conference, and grower visits.



In the face of a significant surplus of grapes in the state this year, the FLGP developed a new website to help growers and wineries find new markets for their products. The *New York Grape & Wine Classifieds* was launched in April 2009, and allows growers and wineries to advertise grapes and bulk juice or wine that they have available or that they are looking to purchase. The service also accepts ads for vineyard and winery equipment, small numbers of vines that may be needed during planting or left over from planting, and industry employment opportunities. There is no charge to list ads on the website, and it is open to industry members across New York. The service has been used extensively by growers and wineries in its first year of operation, with over 450 ads placed on the site over its first 6 months of operation. Feedback from growers and winemakers has been very positive, with a number of them reporting that they have been able to sell their products to new buyers both in New York and outside of the state. The FLGP was able to secure funding from the New York Wine & Grape Foundation to support the ongoing development and maintenance of the website. We are also working with the Wine & Grape Foundation on ways to better promote the website to other regions of the country in hopes of continuing to expand the market for New York grapes.



Cornell University
Cooperative Extension

Cornell Cooperative Extension of Yates County

SEPTEMBER 2010

Building Strong and Vibrant New York Communities

CCE EVENTS AND TIPS FOR SEPTEMBER

- September 13th – 4-H Leader and Parent Gathering, 7:00pm
- Gardeners: Now is a good time to order spring flowering bulbs to get them planted this fall. As plants die down in your vegetable garden remove and compost them. If the plant vegetation is diseased remove them and burn or bury them.



Sun	Mon	Tue	Wed	Thu	Fri	Sat
			1	2	3	4
5	6 Office Closed Labor Day	7	8	9	10	11
12	13	14	15	16	17	18
19	20	21	22	23	24	25
26	27	28	29	30		

Yates County Office Building
417 Liberty Street, Penn Yan, New York 14527

Phone: 315-536-5123; Fax: 315-536-5117

Website: www.cce.cornell.edu/yates

CORNELL VEGETABLE PROGRAM

Improving High Tunnel Profits



This spring CVP specialist Judson Reid worked with a cooperating farmer to maximize the economic return of their high tunnels. With high light and the vertical infrastructure of high tunnels in spring, could we squeeze in another crop besides tomatoes? In mid-February petunias were seeded, at the same time as the high tunnel tomatoes. Tomatoes were transplanted in mid-April, and the petunias were potted-up into 12-inch hanging baskets, then spaced at a low density above the tomato crop. By June the flower baskets were sold and the tomatoes were starting to ripen fruit. To avoid pests moving from the flowers to the tomatoes, CVP technician Kathryn Klotzbach scouted weekly. This represented the integration of two grants. New York Farm Viability is funding our research of new high tunnel crops, and Northeast SARE is funding natural pest control in tunnels. While we are still processing data, it looks like we can add \$1500-2000 dollars revenue per 120 ft tunnel and yet avoid chemical pesticides.



Cornell University
Cooperative Extension

Cornell Cooperative Extension of Yates County

OCTOBER 2010

Building Strong and Vibrant New York Communities

CCE EVENTS AND TIPS FOR OCTOBER

- National 4-H Week, October 3-9
- 4-H Achievement Night, date TBA
- Gardeners: It is time to plant those tulip bulbs and any other spring flowering bulbs.



Sun	Mon	Tue	Wed	Thu	Fri	Sat
					1	2
3	4	5	6	7	8	9
10	11 Office Closed Columbus Day observed	12	13	14	15	16
17	18	19	20	21	22	23
24	25	26	27	28	29	30
31						

Yates County Office Building
417 Liberty Street, Penn Yan, New York 14527

Phone: 315-536-5123; Fax: 315-536-5117
Website: www.cce.cornell.edu/yates



WINTER AND HOLIDAY SAVINGS



Energy

Seal the Hatches!

Use weather stripping and caulking to be sure all air leaks around doors, windows and other access openings! Your insulation will be more effective without air leaks!

Use CFL's

For your household lighting, you can save about \$70.00 over the life of the bulb (10,000 hours) by switching from incandescent bulbs to compact fluorescent lights (CFL).

LED Holiday Lighting

Light Emitting Diodes (LED's) are the way to go for holiday lighting! They use very little electricity, last a very long time, and come in a variety of styles and designs!

Attend a FREE

"Save Energy - Save Dollars" Workshop!

Go to our website!

Check out 'Upcoming Classes'

<http://counties.cce.cornell.edu/Yates/>

Financial

Make a list and check it twice, and

STICK TO IT!

Plan ahead! How much will you need for holiday spending? How much can you set aside each paycheck so you can do your shopping

STRESS FREE!!

Do not spend money that you do not have.

SHOP EARLY! Avoid crowds and impulse buying! Go with a plan (and a list!)

REMEMBER THE SPIRIT OF THE SEASON!

Gifts from the heart are priceless!

Homemade is always best!

Help children share in the spirit of the season by encouraging community service and involvement.

Plan to attend a **FREE** financial management workshop! Check our website!



Cornell University
Cooperative Extension

Cornell Cooperative Extension of Yates County

NOVEMBER 2010

Building Strong and Vibrant New York Communities

CCE EVENTS AND TIPS FOR NOVEMBER

- Gardeners: Tie, support and protect any shrubs or trees that may get damaged from winter snow and ice.
- The best way to thaw a frozen turkey is in the refrigerator. Figure 24 hours for every 4-5 pounds, so a 15 pound bird will take about three days to thaw. Thaw your turkey in its original packaging and place it on a tray to catch any juices.
- Leave your turkey, stuffing and other holiday dinner foods at room temperature for no longer than 2 hours.
- Use leftover turkey with in 3-4 days or freeze.

Sun	Mon	Tue	Wed	Thu	Fri	Sat
	1	2	3	4	5	6
7	8	9	10	11	12	13
14	15	16	17	18	19	20
21	22	23	24	25	26	27
				Office Closed for Thanksgiving Holiday		
28	29	30				

Yates County Office Building
417 Liberty Street, Penn Yan, New York 14527

Phone: 315-536-5123; Fax: 315-536-5117

Website: www.cce.cornell.edu/yates

KEUKA LAKE LAND USE LEADERSHIP TRAINING

CCE collaborated with the Keuka Lake Association, Keuka Watershed Improvement Cooperative, Pace University, Cornell University CARDI, and Genesee Finger Lakes Regional Planning Council (GFLRPC) and applied for and was awarded a NYS Quality Communities grant. A steering committee was formed to identify local leaders for the program and to help with curriculum development. Two, 4-day training sessions with 35 participants each were held at Keuka College. The training was tailored to address issues unique to the Keuka Lake watershed (i.e., steep slopes, ag land preservation, etc.). Both content and process skills were presented and learned in the workshops. A land use plan development committee was formed with participants from the training sessions to work with GFLRPC and CCE to develop a watershed land use plan.

As a result, seventy municipal leaders participated in the land use training and 15 participated in the land use plan development committee. Thirty copies of the *Keuka Watershed Land Use Planning Guide* were delivered to each municipality along with a cooperation agreement that all municipalities signed. Testimonials from LULA training include:

- *“This class was highly valuable both for the skills participants garnered as well as the connections made both within a community and between communities.”*
- *“If you are involved in any stage of local government, this is very valuable training.”*
- *“This is an excellent training to help you realize that collaborative decision making helps makes the best, informed decision taking or attempting to take the interest of all affected parties (not just primary stakeholders) into consideration.”*
- *“What a wonderful opportunity to gather together as watershed towns plan for the future and share problems and solutions.”*
- *“Makes one more able to participate in a Town Committee on land use.”*

Additional direct results accomplished from this program include the creation of a network of people interested, motivated and knowledgeable on issues affecting Keuka and a plan to guide future actions related to land use.





Cornell University
Cooperative Extension

Cornell Cooperative Extension of Yates County

DECEMBER 2010

Building Strong and Vibrant New York Communities

CCE EVENTS AND TIPS FOR DECEMBER

- Gardeners: Prune evergreen branches to decorate your home for the holiday season.
- December – CCE Yates Annual Meeting and Dinner, date TBA



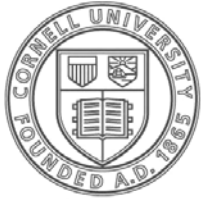
Sun	Mon	Tue	Wed	Thu	Fri	Sat
			1	2	3	4
5	6	7	8	9	10	11
12	13	14	15	16	17	18
19	20	21	22	23	24	25
26	27	28	29	30	31	

Yates County Office Building
417 Liberty Street, Penn Yan, New York 14527

Phone: 315-536-5123; Fax: 315-536-5117

Website: www.cce.cornell.edu/yates

Cornell University



Cooperative Extension
Yates County

CORNELL COOPERATIVE EXTENSION
YATES COUNTY OFFICE BUILDING
417 LIBERTY STREET
PENN YAN, NY 14527
315-536-5123

Greetings!

On behalf of Cornell Cooperative Extension of Yates County, I am pleased to send you the 2009 Annual Report in calendar format. As you plan for next year, enjoy reading about CCE's programs, staff and volunteers working to make Yates County a more vibrant and vital community.

Sincerely,

A handwritten signature in cursive script that reads "Peter Landre".

Peter Landre
Executive Director